

ANNALES

Anali za istrske in mediteranske študije
Annali di Studi istriani e mediterranee
Annals for Istrian and Mediterranean Studies
Series Historia Naturalis, 36, 2026, 1





ANNALES

Anali za istrske in mediteranske študije
Annali di Studi istriani e mediterranei
Annals for Istrian and Mediterranean Studies

Series Historia Naturalis, 36, 2026, 1

**UREDNIŠKI ODBOR/
COMITATO DI REDAZIONE/
BOARD OF EDITORS:**

Alessandro Acquavita (IT), Nicola Bettoso (IT), Christian Capape (FR), Darko Darovec, Dušan Devetak, Jakov Dulčić (HR), Edy Fantinato (IT), Ana Fortič, Andrej Gogala, Daniel Golani (IL), Danijel Ivajnsič, Hakan Kabasakal (TR), Mitja Kaligarič, Marcelo Kovačić (HR), Petar Kružić (HR), Lovrenc Lipej, Vesna Mačić (ME), Alenka Malej, Borut Mavrič, Patricija Mozetič, Martina Orlando-Bonaca, James Pierson (USA), Michael Stachowitsch (AT), Francesco Tiralongo (IT), Tom Turk, Al Vrezec

**Glavni urednik/Redattore capo/
Editor in chief:**

Darko Darovec

**Odgovorni urednik naravoslovja/
Redattore responsabile per le scienze
naturali/Natural Science Editor:**

Lovrenc Lipej

Urednici/Redattrici/Editors:

Martina Orlando-Bonaca, Ana Fortič

Prevajalci/Traduttori/Translators:

Martina Orlando-Bonaca (sl./it.)

**Oblikovalec/Progetto grafico/
Graphic design:**

Dušan Podgornik, Lovrenc Lipej

Tisk/Stampa/Print:

Založništvo PADRE d.o.o.

Izdajatelj/Editori/Published by:Zgodovinsko društvo za južno Primorsko - Koper / Società storica del Litorale - Capodistria®
Inštitut IRRIS za raziskave, razvoj in strategije družbe, kulture in okolja / Institute IRRIS for Research, Development and Strategies of Society, Culture and Environment / Istituto IRRIS di ricerca, sviluppo e strategie della società, cultura e ambiente®**Sedež uredništva/Sede della redazione/
Address of Editorial Board:**Nacionalni inštitut za biologijo, Morska biološka postaja Piran / Istituto nazionale di biologia, Stazione di biologia marina di Pirano / National Institute of Biology, Marine Biology Station Piran
SI-6330 Piran / Pirano, Fornače/Fornace 41, tel.: +386 5 671 2900, fax +386 5 671 2901;
e-mail: annalesSHN@nib.si, internet: www.zdjp.si

Redakcija te številke je bila zaključena 20. 06. 2026.

**Sofinancirajo/Supporto finanziario/
Financially supported by:**

Javna agencija za znanstveno-raziskovalno in inovacijsko dejavnost Republike Slovenije (ARIS)

Annales - Series Historia Naturalis izhaja dvakrat letno.**Naklada/Tiratura/Circulation:** 300 izvodov/copie/copies

Revija Annales, Series Historia Naturalis je vključena v naslednje podatkovne baze / La rivista Annales, series Historia Naturalis è inserita nei seguenti data base / Articles appearing in this journal are abstracted and indexed in: BIOSIS-Zoological Record (UK); Aquatic Sciences and Fisheries Abstracts (ASFA); Elsevier B.V.: SCOPUS (NL); Directory of Open Access Journals (DOAJ).

To delo je objavljeno pod licenco / Quest'opera è distribuita con Licenza / This work is licensed under a Creative Commons BY 4.0.

Navodila avtorjem in vse znanstvene revije in članki so brezplačno dostopni na spletni strani <https://zdjp.si/en/p/annalesshn/>
The submission guidelines and all scientific journals and articles are available free of charge on the website <https://zdjp.si/en/p/annalesshn/>
Le norme redazionali e tutti le riviste scientifiche e gli articoli sono disponibili gratuitamente sul sito <https://zdjp.si/en/p/annalesshn/>

VSEBINA / *INDICE GENERALE* / *CONTENTS*

BIOTSKA GLOBALIZACIJA
GLOBALIZZAZIONE BIOTICA
BIOTIC GLOBALIZATION

Alen SOLDO, Rigers BAKIU & Sherif DURMISHAJ
 The First Record of Bastard Grunt *Pomadasys incisus* (Bowdich, 1825) in Albanian Waters (Adriatic Sea) 1
Prvi zapis o pojavljanju neprave prašičevke Pomadasys incisus (Bowdich, 1825) v albanskih vodah (Jadransko morje)

Pero UGARKOVIĆ, Ilija ČETKOVIĆ, Olivera MARKOVIĆ, Aleksandar JOKSIMOVIĆ, Nikola ĐORĐEVIĆ & Jakov DULČIĆ Additional Records of the Bastard Grunt, *Pomadasys incisus* (Bowdich, 1825), from the Eastern Adriatic Sea 7
Dodatne najdbe neprave prašičevke, Pomadasys incisus (Bowdich, 1825), iz vzhodnega Jadranskega morja

Rüştü KIRMAN & Murat BİLECENOĞLU Significant Range Expansion of *Sepioteuthis lessoniana* (Cephalopoda: Loliginidae) in the Aegean Sea Based on Scuba and Photographic Observations 15
Znatno razširjanje areala vrste Sepioteuthis lessoniana (Cephalopoda: Loliginidae), v Egejskem morju na podlagi podvodnih opazovanj in fotografiranja

Adrian BRAJKOVIĆ, Iris MATULJA & Neven IVEŠA
 Conquering the North: New Occurrence of the Common Lionfish, *Pterois miles* (Bennett, 1828), in the Adriatic Sea 21
Osvajanje severa: novi zapis o pojavljanju navadne plamenke, Pterois miles (Bennett, 1828), v Jadranskem morju

Alan DEIDUN, Bruno ZAVA, Maria CORSINI-FOKA, Arnold SCIBERRAS & Alessio MARRONE First Record of the Devil Firefish *Pterois miles* (Bennett, 1828) (Actinopterygii: Scorpaenidae) from Maltese Coastal Waters 29
Prvi zapis o pojavljanju plamenke Pterois miles (Bennett, 1828) (Actinopterygii: Scorpaenidae) v malteških obalnih vodah

Chirine HUSSEIN, Amir IBRAHIM, Firas ALSHAWY, Mouina BADRAN & Rahaf ABO ASA First Mediterranean Record of the Diagonal Butterflyfish, *Chaetodon fasciatus* Forsskål, 1775, Reported from Syrian Waters 35
Prvi sredozemski zapis o pojavljanju poševnoprogame štetinozobke, Chaetodon fasciatus Forsskål, 1775, iz sirskih voda

Houssein ELBARAASI, Tarek SHOEIB, Mona SAID & Laith A. JAWAD A Further Record of the Barred Knifejaw, *Oplegnathus fasciatus* (Temminck & Schlegel, 1844), a Pacific Species, from the Mediterranean: A New Record from Benghazi, Libya 41
Novi zapis o vrsti Oplegnathus fasciatus (Temminck & Schlegel, 1844), pacifiški vrsti, v Sredozemlju: nova najdba iz Bengazija v Libiji

Alen SOLDO & Rigers BAKIU Rapid Increase in Records of the Invasive Silver-cheeked Toadfish *Lagocephalus sceleratus* (Gmelin, 1789) in the Adriatic Sea 49
Hitro naraščanje pojavov invazivne srebrnoproge napihvalke Lagocephalus sceleratus (Gmelin, 1789) v Jadranskem morju

Gerasimos KONDYLATOS, Konstantinos KALAENTZIS, Styliani MINOUDI & Maria CORSINI-FOKA Further Molecular Identification Confirms the Occurrence of *Lagocephalus guentheri* Miranda Ribeiro, 1915 in the Aegean Coastal Waters of Greece 55
Nadaljnja molekularna identifikacija potrjuje prisotnost vrste Lagocephalus guentheri Miranda Ribeiro, 1915 v egejskih obalnih vodah Grčije

Deniz ERGÜDEN & Cem ÇEVİK Length–Weight and Length–Length Relationships, and Condition Factor of *Ambassis dussumieri* Cuvier, 1828, in the Northeastern Mediterranean, Türkiye 65
Dolžinsko-masni odnos med dolžino in kondicijskim faktorjem pri vrsti Ambassis dussumieri Cuvier, 1828, v severovzhodnem Sredozemskem morju, Turčija

Okun AKYOL & HALİL ŞEN Unexpected Occurrence of Prussian Carp *Carassius gibelio* (Cyprinidae) in Homa Lagoon (Izmir Bay, Aegean Sea) 73
Nepričakovani pojav srebrnega koreslja Carassius gibelio (Cyprinidae) v laguni Homa (Izmirski zaliv, Egejsko morje)

SREDOZEMSKA HRUSTANČNICE
 SQUALI E RAZZE MEDITERRANEE
 MEDITERRANEAN SHARKS AND RAYS

Terry CARBON, Emily GIGNON, Justine LALLAU-VAZZOLER, Hugo MENARD, Claudio BARRIA, Ana I. COLMENERO & Nicolas ZIANI Precopulatory Behaviour of *Pteroplatytrygon violacea* (Myliobatiformes: Dasyatidae) in the Northwestern Mediterranean 81
Predkopulacijsko vedenje vijoličnega morskega biča (Pteroplatytrygon violacea) (Myliobatiformes: Dasyatidae) v severozahodnem Sredozemlju

Hakan KABASAKAL Distribution of <i>Odontaspis ferox</i> in the Mediterranean Sea: Insights from Spatial and Temporal Analyses 87 <i>Razširjenost vrste Odontaspis ferox v Sredozemskem morju: Spoznanja na podlagi prostorskih in časovnih analiz</i>	MORSKA FAVNA FAUNA MARINA MARINE FAUNA
Hristina GELEVSKA, Borut MAVRIČ, Lovrenc LIPEJ & Christian CAPAPÉ Is the Gulf of Trieste a potential nursery area for some elasmobranch species? 99 <i>Ali je Tržaški zaliv potencialno območje odraščanja (jaslice) za določene vrste hrustančnic?</i>	Francesco TIRALONGO, Paola LEOTTA & Riccardo MARTELLUCCI <i>Physalia physalis</i> in the central Mediterranean Sea: Recent observations associated with mass strandings of <i>Velella velella</i> and surface circulation dynamics 165 <i>Portugalska ladjica (Physalia physalis) v osrednjem Sredozemskem morju: nedavna opažanja v povezavi z masovnimi nasedanji morskega jadrčka (Velella velella) in dinamiko površinskega kroženja vode</i>
IHTIOFAVNA ITTIOFAUNA ICHTHYOFAUNA	
Cem DALYAN, Yunus GÖNÜL, Mahmud Samed ŞAHİNOĞULLARI & Hakan KABASAKAL New data on the Occurrence and Morphology of the Armless Snake Eel, <i>Dalophis imberbis</i> (Ophichthidae), from the Northeastern Mediterranean Sea 119 <i>Novi podatki o pojavljanju in morfologiji kačaste jegulje, Dalophis imberbis (Ophichthidae), iz severovzhodnega Sredozemskega morja</i>	Andrea LOMBARDO, Juba CHABANE & Rachida GHALMI First Contribution to the Study of the "Sea Slug" Fauna (Gastropoda, Heterobranchia) of the Algerian coast 177 <i>Prvi prispevek k proučevanju favne „goliš morskih polžev“ (Gastropoda, Heterobranchia) alžirske obale</i>
Chirine HUSSEIN, Firas ALSHAWY & Amir IBRAHIM First Record of the Mediterranean Dealfish, <i>Trachipterus trachipterus</i> (Gmelin, 1789) (Trachipteridae), in Syrian Marine Waters 127 <i>Prvi zapis o pojavljanju kosice, Trachipterus trachipterus (Gmelin, 1789) (Trachipteridae), v sirskih morskih vodah</i>	Borut MAVRIČ, Tjaša PREMRL, Martin MAVRIČ, Tina MIRT, Neža LEBAN, Tihomir MAKOVEC & Lovrenc LIPEJ Assessing Soft-Bottom Epibenthic Communities: Methodological Insights into Dredging and Video Surveys 203 <i>Ocenjevanje epibentoških združb mehkega dna: metodološki vpogledi v dredžanje in video pregleda</i>
Igor AGOSTINI & Okan AKYOL On the Occurrence of the Currently Largest Recorded <i>Pagellus erythrinus</i> (Sparidae) in the Tyrrhenian Sea (Italy) 133 <i>O pojavljanju trenutno največjega evidentiranega primerka vrste Pagellus erythrinus (Sparidae) v Tirenskem morju (Italija)</i>	FAVNA FAUNA FAUNA
Ismail Burak DABAN & Yusuf ŞEN Substantiated Record and Preliminary Biological Insights of <i>Microlipophrys dalmatinus</i> (Steindachner & Kolombatović, 1883) from the Sea of Marmara, Türkiye 141 <i>Potrjen zapis o pojavljanju in predhodna biološka spoznanja o vrsti Microlipophrys dalmatinus (Steindachner & Kolombatović, 1883) iz Marmarskega morja, Turčija</i>	Kim LEBAN, Iztok ŠKORNIK, Špela ČONČ, Mateja BREG VALJAVEC, Žan KURALT, Lenart ŠTAUT, Jure TIČAR, Katarina POLAJNAR HORVAT, Primož GAŠPERIČ, Aleš SMREKAR & Melita VAMBERGER Habitat Insights for the European Pond Turtle (<i>Emys orbicularis</i>) in the Coastal Wetland Area Sečovlje Salina Nature Park, Slovenia 221 <i>Habitatne značilnosti močvirske sklednice (Emys orbicularis) v krajinskem parku Sečovljske soline, Slovenija</i>
Zeliha ERDOĞAN, Gülçin ULUNEHİR AYDIN, Hatice TORCU-KOÇ & Tuğba ANBAROĞLU Population Study of <i>Trachurus mediterraneus</i> Focused on Reproductive Biology in Edremit Bay, Northern Aegean Sea 151 <i>Razmnoževalna biologija sredozemskega šura (Trachurus mediterraneus) v sklopu populacijske raziskave v Edremitnem zalivu (severno Egejsko morje)</i>	Leon CIMERMAN & Matija KRIŽNAR Najdbe pleistocenske avifavne v kamnolomu Črni Kal (Primorska, Slovenija) 243 <i>Pleistocene Avifauna Finds in the Črni Kal Quarry (Primorska Region, Slovenia)</i>
	Kazalo k slikam na ovitku 255 Index to images on the cover 255

SIGNIFICANT RANGE EXPANSION OF *SEPIOTEUTHIS LESSONIANA* (CEPHALOPODA: LOLIGINIDAE) IN THE AEGEAN SEA BASED ON SCUBA AND PHOTOGRAPHIC OBSERVATIONS

Rüştü KIRMAN

Türkmen Mahallesi Atatürk Bulvarı Süzgeç Yalı Apt. No:36/201, Kuşadası, Aydın, Türkiye
e-mail: rustukirman@gmail.com

Murat BİLECENOĞLU

Department of Biology, Faculty of Science, Aydın Adnan Menderes University, Efeler, Aydın, Türkiye
e-mail: mbilecenoglu@adu.edu.tr

ABSTRACT

The bigfin reef squid, Sepioteuthis lessoniana, is by far the most widespread Lessepsian cephalopod in the Mediterranean Sea and has considerably expanded its range since it was first recorded almost two decades ago. In Türkiye, the species' occurrence was hitherto restricted to the northern Levantine shores, with reports from Iskenderun, Antalya, and Fethiye Bays. This study reports the presence of S. lessoniana from the Aegean Sea coast of Türkiye for the first time, suggesting a significant northward range of expansion. The observed individuals displayed spawning behavior, and several egg masses were deposited within inshore crevices, indicating the potential presence of a successfully breeding population in the region.

Key words: Bigfin reef squid, Lessepsian migrant, range expansion, invasive species, first record

ESPANSIONE SIGNIFICATIVA DELL'AREALE DI *SEPIOTEUTHIS LESSONIANA* (CEFALOPODA: LOLIGINIDAE) NEL MAR EGEO BASATA SU OSSERVAZIONI SUBACQUEE E FOTOGRAFICHE

SINTESI

Il calamaro di Lesson, Sepioteuthis lessoniana, è di gran lunga il cefalopode lessepsiano più diffuso nel Mediterraneo e ha ampliato considerevolmente il proprio areale da quando è stato segnalato per la prima volta quasi due decenni fa. In Turchia, la presenza della specie era finora limitata alle coste settentrionali del Levante, con segnalazioni dalle baie di Iskenderun, Antalya e Fethiye. Questo studio riporta per la prima volta la presenza di S. lessoniana lungo la costa egea della Turchia, suggerendo una significativa espansione dell'areale verso nord. Gli individui osservati mostravano comportamenti riproduttivi e diverse masse di uova sono state deposte all'interno di fessure costiere, indicando la possibile presenza di una popolazione in riproduzione con successo nella regione.

Parole chiave: calamaro di Lesson, migrante lessepsiano, espansione dell'areale, specie invasiva, prima segnalazione

INTRODUCTION

The occurrence and establishment success of non-indigenous cephalopods in the Mediterranean Sea have long been neglected and have only become a focus of scientific interest over the past two decades (Bello *et al.*, 2020). According to the most comprehensive accounts, five Lessepsian species originating from the Red Sea and Indo-Pacific are currently recognized, namely *Sepia dollfusi*, *Sepioteuthis lessoniana*, *Uroteuthis arabica*, *Octopus cyanea*, and *Amphioctopus aegina* (Marrone *et al.*, 2025), while two additional species (*Acanthosepion pharaonis* and *Tremoctopus gracilis*) are either regarded as questionable or requiring further research to clarify their pathways of introduction (Bello *et al.*, 2020).

Among all alien cephalopod species in the Mediterranean Sea basin, the status of the bigfin reef squid, *S. lessoniana* R.P. Lesson, 1831, is of special concern owing to its invasive potential. This neritic loliginid species is native to the Indo-Pacific region, with a broad distribution from the eastern coast of Africa and the Red Sea in the west to the Hawaiian Islands in the east, and from Japan in the north to Australia and New Zealand in the south (Jereb & Roper, 2010). The species was first recorded in the Mediterranean Sea in 2002, when a single individual was captured in Iskenderun Bay, Türkiye (Salman, 2002). Within just seven years, its range expanded to Rhodes Island, Greece, most likely along the Asiatic shores of the Mediterranean, aided by the prevailing currents (Lefkaditou *et al.*, 2009). Rapidly spreading westward to the central Mediterranean, *S. lessoniana* has reached as far as Tunisia in the south and the Adriatic Sea in the north, becoming a commercial catch in several localities (Bello *et al.*, 2020; Marrone *et al.*, 2025).

Published information on *S. lessoniana* in Türkiye is quite scarce. Following its first record by Salman (2002),

small schools of up to 15 individuals were observed in Fethiye Bay during a governmental biodiversity project (anonymous, 2009), with subsequent records reported from Kaş (Draman, 2012) and Antalya Bay (Salman *et al.*, 2023). The species was included in the list of invasive marine species of Türkiye (105 species in total) by Çınar *et al.* (2021). In this paper, we report a new occurrence of *S. lessoniana* from Kuşadası Bay (Türkiye), based on photographic data obtained through SCUBA diving observations. This recent finding confirms a significant range expansion of the species in the Aegean Sea, and careful monitoring is warranted due to its potential intrusion further northward.

MATERIAL AND METHODS

On 17 August 2025, three individuals of *S. lessoniana* were observed at a depth of 5 m during a recreational SCUBA dive carried out at Kuşadası Bay (37°52'39"N, 27°15'55"E) on the central Aegean Sea coast of Türkiye. The diving site is a shallow, small cove with a sandy and rocky substrate up to 3 m deep, and dense seagrass meadows (*Posidonia oceanica*) at greater depths. Since the squids approached the divers very closely, it was possible to estimate their approximate mantle lengths, which ranged from 20 cm for two individuals to 30 cm for the third. Additional observations of three more bigfin reef squid individuals (of the same size classes) were made at the same cove on 20 September 2025, just slightly farther offshore and at a greater depth (7 m) than the previous observation site. Wide-angle underwater photographs were taken with a Panasonic DMC-TZ10 compact digital camera, while close-up images were captured using an Olympus OM-1 mirrorless dSLR camera equipped with a 90 mm lens. Species identification was based on photographic records following Jereb & Roper (2010), and nomenclature follows the WoRMS Editorial Board (2025).

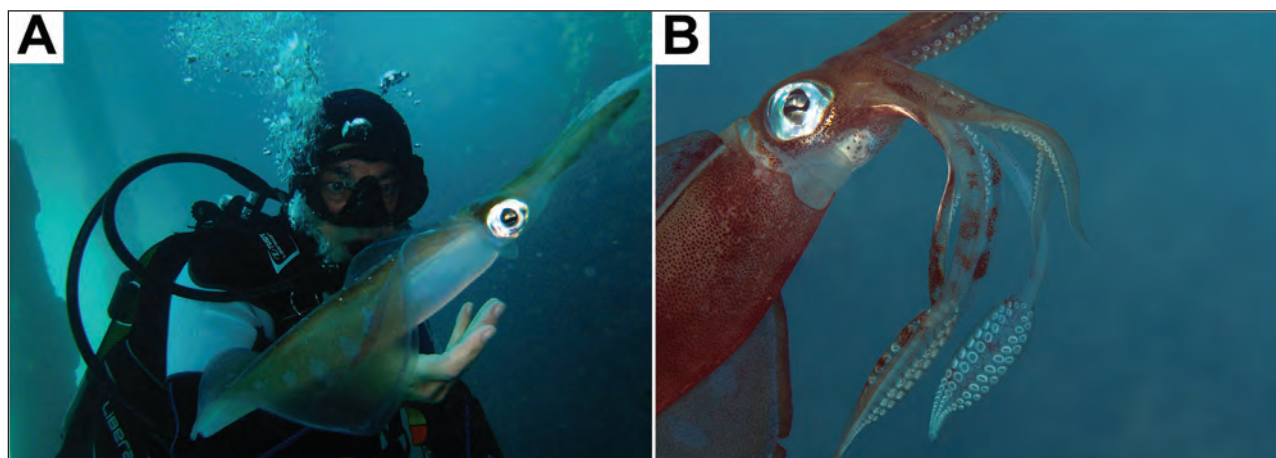


Fig. 1: Underwater photographs of *Sepioteuthis lessoniana* from Kuşadası Bay, Aegean Sea, Türkiye. **A)** Lateral view (photograph by C. Gedikoğlu), **B)** Close-up showing tentacular clubs (photograph by R. Kirman).
Sl. 1: Podvodne fotografije vrste *Sepioteuthis lessoniana* iz zaliva Kuşadası (Egejsko morje, Turčija). **A)** stranski pogled (foto: C. Gedikoğlu), **B)** bližnji posnetek, ki prikazuje tentakularne kijaste izrastke (foto: R. Kirman).

RESULTS AND DISCUSSION

A close examination of underwater photographs confirmed the species to be *S. lessoniana*, which is characterized by a broadly elliptical cuttlefish-like morphology with thick, muscular, oval fins extending over 85% of the mantle length to the posterior end, forming a continuous edge without separate lobes (Fig. 1A), suckers arranged in four series on proximal tentacular clubs, enlarged median manal suckers, and large eyes (Fig. 1B); all consistent with the descriptions of Jereb & Roper (2010). The proportion of fin length relative to mantle length is the key diagnostic feature that distinguishes the bigfin reef squid from the other Mediterranean confamilial members and facilitates species identification from underwater photographs.

Documenting the first introductions of invasive species in a country or region is crucial for early detection and rapid response, although this is often hindered by observer lag (delay between the species' actual arrival and its first published record) (González-Moreno *et al.*, 2025). Our study site, Kuşadası Bay, has been regularly and frequently monitored through scuba diving and underwater photography by the

author over the past decade, providing the research team with the opportunity to rapidly detect any newly arrived species to the region. The initial bigfin reef squid observation in August 2025 thus most likely reflects a recent development that warrants close monitoring. Since the location of this new record is over 300 nautical miles north of the site where the species was previously observed (Fethiye Bay), we speculate that the bigfin reef squid may already be present in other areas of the southern Aegean shores (*i.e.*, Gökova Bay), where it is currently unrecorded. The spreading pattern of *S. lessoniana* along the Turkish coastline (Fig. 2) is consistent with that of several other Lessepsian species that first established populations on the southern Anatolian shelf and then gradually expanded their distribution ranges toward the Aegean Sea, following the prevailing counterclockwise currents of the Mediterranean Sea (Çinar *et al.*, 2021).

During our diving observations in Kuşadası Bay, bigfin reef squid were first encountered hovering in midwater, then two individuals approached a nearby crevice. Both were estimated to exceed 20 cm in mantle length, indicating sexual maturity according to the developmental stage descriptions of Segawa (1987). Based on the reproductive

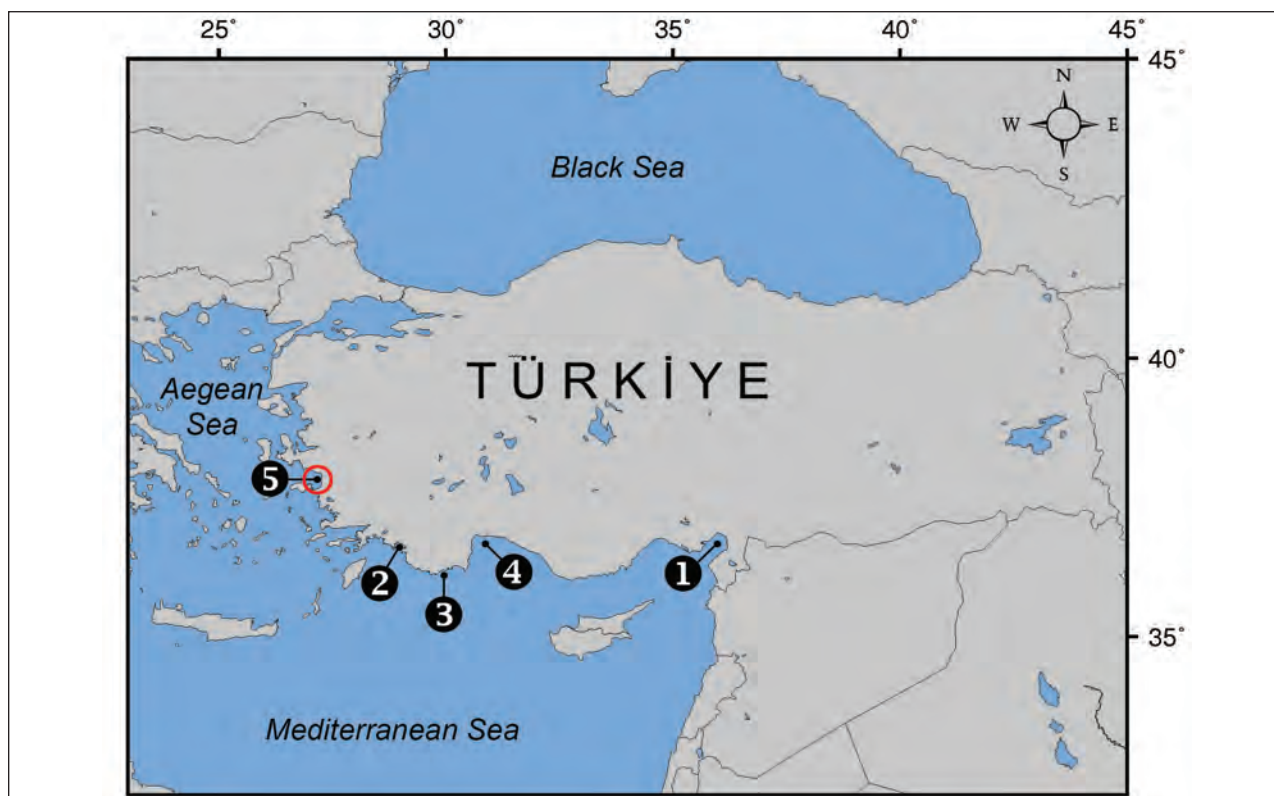


Fig. 2: Location of the *S. lessoniana* observation in the Aegean Sea (encircled in red). Previous occurrence records from Türkiye are indicated in chronological order: 1) Iskenderun Bay (Salman, 2002), 2) Fethiye Bay (anonymous, 2009), 3) Kaş (Draman, 2012), 4) Antalya Bay (Salman *et al.*, 2023), 5) Kuşadası Bay (present study).

Sl. 2: Lokacija opazovanja vrste *S. lessoniana* v Egejskem morju (obkroženo z rdečo). Predhodni zapisi o pojavljanju v Turčiji so navedeni v kronološkem zaporedju: 1) zaliv Iskenderun (Salman, 2002), 2) zaliv Fethiye (anonimno, 2009), 3) Kaş (Draman, 2012), 4) zaliv Antalya (Salman *in sod.*, 2023), 5) zaliv Kuşadası (pričujoča raziskava).

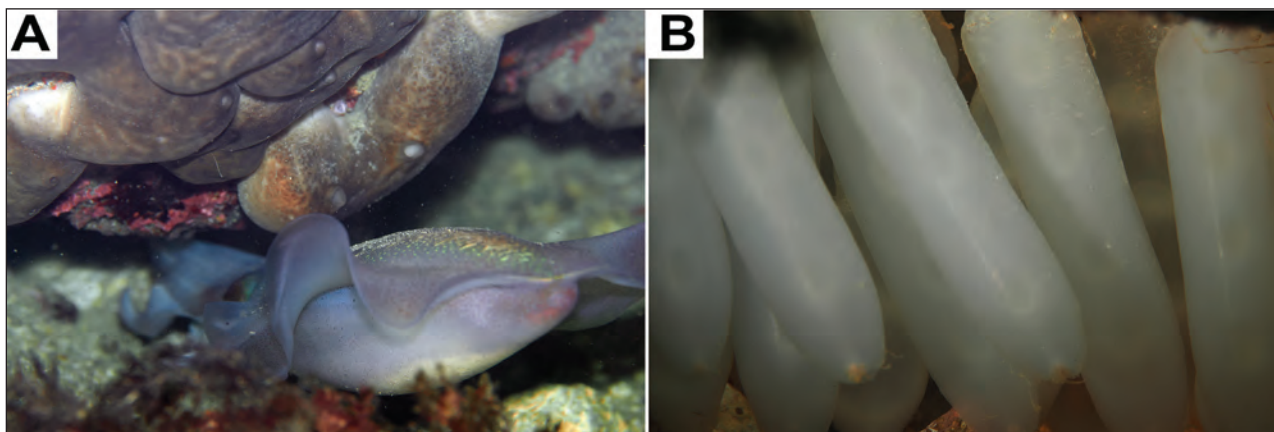


Fig. 3: Breeding behavior of *S. lessoniana* observed at the study site. A) Female entering the crevice to lay eggs, B) Egg masses attached to the crevice roof (photographs by R. Kirman).

Sl. 3: Razmnoževalno vedenje vrste *S. lessoniana*, opazovano na lokaciji raziskave. A) Samica, ki vstopa v razpoko, da bi odložila jajčeca, B) Jajčne mase, pritrjene na strop razpoke (foto: R. Kirman).

body patterns described for the species (Lin *et al.*, 2017), the smaller individual (ca. 20 cm ML) exhibiting spots on the dorsal mantle, was identified as a female, whereas the larger one (30 cm ML), displaying lines on the dorsal mantle, was identified as a male. As the female entered the crevice and stayed inside for a short period (Fig. 3A), the male remained stationary outside. Similar activity – later confirmed as spawning behavior – has been reported for the southern reef squid (*S. australis*) in the Indo-Pacific region (Larcombe & Russell, 1971). After both individuals left the area, we approached the crevice and observed the egg masses. There were multiple batches of capsules attached to the crevice roof (Fig. 3B). Photographs from our study site indicate the presence of 2 to 6 egg masses, with each capsule – according to the literature (Jereb & Roper, 2010) – potentially containing up to 13 eggs. Field observations from the Pacific further indicate that adult *S. lessoniana* migrate from offshore to shallow inshore areas for spawning (Segawa, 1987), and that reproduction occurs almost year-round (Jereb & Roper, 2010; Chen *et al.*, 2015), with seasonal peaks ranging from two (spring and autumn; Ching *et al.*, 2017) to three (winter, spring, and summer; Kimoto *et al.*, 2023), depending on the ecosystem.

The bigfin reef squid is distributed throughout the central and eastern Mediterranean Sea; however, its potential threat to local food webs and biodiversity is not currently a focus of ongoing research efforts. Lefkaditou *et al.* (2009) highlighted potential competition with native species, such as *Loligo vulgaris*, as both generally occupy similar habitats (*i.e.*, sandy bottoms and seagrass beds) and are abundant at depths of up to 100 m (Jereb & Roper, 2010). Such interspecies interactions might lead to changes in fisheries practices due to shifts in catch composition. Owing to its high commercial value in artisanal and nearshore fisheries across the Indo-Pacific, the bigfin reef squid is one of the most extensively studied loliginid species within its native range; however, its

life-history traits in newly colonized environments remain under-researched and quantifying the actual ecological and socioeconomic consequences will require targeted studies. It is important to note that Mediterranean records of *S. lessoniana* should be critically validated (Bello *et al.*, 2020), as substantial morphological and genetic evidence suggests extremely high levels of cryptic diversity within the species complex (Cheng *et al.*, 2015).

Several biological traits of *S. lessoniana* may increase its potential to exhibit invasive characteristics and colonize new areas. These include rapid growth, a relatively short lifespan (up to 7 months) with first maturity at 120 days (Kavitha *et al.*, 2024), year-round reproduction (Jereb & Roper, 2010), flexible spawning substrate selection (Kimoto *et al.*, 2023), and high tolerance to thermal fluctuations (Chiang *et al.*, 2024). Together, these traits contribute to quick rapid population responses to favorable environmental conditions, facilitating reproduction and range expansion. Our recent observation of occurrence and breeding activity of *S. lessoniana* along the central Aegean Sea coast provides strong evidence of an established population in the region, although it remains unclear whether it can withstand existing physical and ecological pressures. Since invasive species often exhibit complex interactions with members of recipient ecosystems, implementing appropriate environmental management decisions is a challenging task (Katsanevakis *et al.*, 2014). Priority should therefore be given to assessing the magnitude of potential impacts, which requires in-depth research of the life histories and ecologies of native and Lessepsian loliginid species to evaluate possible competition.

ACKNOWLEDGEMENTS

Special thanks to Cumhuri Gedikoğlu for providing support during scuba dives, and two anonymous reviewers for their constructive comments.

ZNATNO RAZŠIRJANJE AREALA VRSTE *SEPIOTEUTHIS LESSONIANA* (CEPHALOPODA: LOLIGINIDAE), V EGEJSKEM MORJU NA PODLAGI PODVODNIH OPAZOVANJ IN FOTOGRAFIRANJA

Rüştü KIRMAN

Türkmen Mahallesi Atatürk Bulvarı Süzgeç Yalı Apt. No:36/201, Kuşadası, Aydın, Türkiye
e-mail: rustukirman@gmail.com

Murat BİLECENOĞLU

Department of Biology, Faculty of Science, Aydın Adnan Menderes University, Efeler, Aydın, Türkiye
e-mail: mbilecenoglu@adu.edu.tr

POVZETEK

Velikoplavuti grebenski ligenj (Sepioteuthis lessoniana) je daleč najbolj razširjen lesepski glavonožec v Sredozemskem morju in je od prve zabeležbe pred skoraj dvema desetletjema znatno razširil svoj areal. V Turčiji je bil doslej zabeležen le na severno obalo Levantskega morja, z zapisi o pojavljanju iz zalivov Iskenderun, Antalya in Fethiye. Ta raziskava prvič poroča o prisotnosti vrste S. lessoniana ob egejski obali Turčije, kar kaže na znatno širjenje njenega območja razširjenosti proti severu. Pri opazovanih osebkih sta avtorja zaznala razmnoževalno vedenje, v obalnih razpokah pa je bilo odloženih več jajčnih mas, kar kaže na morebitno prisotnost uspešno razmnožujoče se populacije v regiji.

Ključne besede: velikoplavuti grebenski ligenj, lesepska selivka, širjenje areala, invazivna vrsta, prvi zapis o pojavljanju

REFERENCES

- Anonymous (2009):** Fethiye-Göcek Özel Çevre Koruma Bölgesi'nin kıyı ve deniz alanlarının biyoçeşitliliği tespiti projesi final raporu. T.C. Çevre ve Orman Bakanlığı Özel Çevre Koruma Kurumu Başkanlığı: Ankara. 299 pp.
- Bello, G., F. Andaloro & P. Battaglia (2020):** Non-indigenous cephalopods in the Mediterranean Sea: A review. *Acta Adriat.*, 61, 113–134.
- Chen, C. S., J.Y. Chen & C.W. Lin (2015):** Variation in life-history traits for micro-cohorts of *Sepioteuthis lessoniana* in the waters off northern Taiwan. *Fish. Sci.*, 81, 53–64.
- Cheng, S.H., F.E. Anderson, A. Bergman, G.N. Mahardika, Z.A. Muchlisin, B.T. Dang, H.P. Calumpang, K.S. Mohamed, G. Sasikumar, V. Venkatesan & P.H. Barber (2014):** Molecular evidence for co-occurring cryptic lineages within the *Sepioteuthis* cf. *lessoniana* species complex in the Indian and Indo-West Pacific Oceans. *Hydrobiol.*, 725, 165–188.
- Chiang, C.I., M.T. Chung, J.C. Shiao, P.L. Wang & C.H. Wang (2024):** Thermal histories reveal spatiotemporal distribution and population overlapping of *Sepioteuthis lessoniana*. *ICES J. Mar. Sci.*, 81(1), 162–177.
- Ching, T.Y., C.S. Chen & C.H. Wang (2017):** Spatiotemporal variations in life-history traits and statolith trace elements of *Sepioteuthis lessoniana* populations around northern Taiwan. *J. Mar. Biol. Assoc. U.K.*, 99, 203–213.
- Çinar, M.E., M. Bilecenoglu, M.B. Yokes, B. Ozturk, E. Taskin, K. Bakir, A. Dogan & S. Acik (2021):** Current status (as of end of 2020) of marine alien species in Turkey. *PLoS ONE*, 16, e0251086.
- Draman, M. (2012):** The diving guide Kaş. Extended 2nd edition. A4 Ofset Publishing, İstanbul, 194 pp.
- Jereb, P. & C.F.E. Roper (2010):** Cephalopods of the world. An annotated and illustrated catalogue of cephalopod species known to date. Volume 2. Myopsid and Oegopsid Squids. *FAO Species Catalogue for Fishery Purposes*. No. 4, Vol. 2. FAO, Rome, 605 pp.
- González-Moreno, P., A.A. Anđelković, T. Adriaens, C. Botella, J. Demetriou, R. Bastos, S. Bertolino, C. López-Cañizares, F. Essl, Ž. Fišer, M. Glavendekić, M. Herremans, P.E. Hulme, V. Jani, D. Katsada, P. Kleitou, N. La Porta, K. Lapin, M. López-Darias, V. Lozano, A.F. Martinou, D. Oldoni, E. Per, S. Rorke, H.E. Roy, K.M. Schweinzer, K. Swinnen, E. Tricarico, J.R. Vicente, M. Groot & M.J.O. Pocock (2025):** Citizen science platforms can effectively support early detection of invasive alien species according to species traits. *People Nat.*, 7, 278–294.
- Katsanevakis, S., I. Wallentinus, A. Zenetos, E. Lepäkoski, M.E. Çinar, B. Oztürk, M. Grabowski, D. Golani & A.C. Cardoso (2014):** Impacts of invasive alien marine species on ecosystem services and biodiversity: a pan-European review. *Aquat. Invasions*, 9, 391–423.
- Kavitha, M., G. Sasikumar, D. Linga Prabu, P. Laxmialatha & K.K. Sajikumar (2024):** Age and growth of bigfin reef squid, *Sepioteuthis lessoniana* (Cephalopoda: Loliginidae), in Gulf of Mannar Marine Biosphere Reserve, Indian Ocean. *J. Mar. Biol. Assoc. U.K.*, 104, e52.
- Kimoto, S., R. Kawabata & Y. Ikeda (2023):** Relationship between seasonal seagrass growth and egg case dynamics of the oval squid (*Sepioteuthis lessoniana* Féruccac in Lesson, 1832) in the coastal waters of the Ryukyu Archipelago. *Reg. Stud. Mar. Sci.*, 67, 103190.
- Larcombe, M.F. & B.C. Russell (1971):** Egg laying behaviour of the broad squid, *Sepioteuthis bilineata*. *New Zeal. J. Mar. Fresh. Res.*, 5, 3–11.
- Lefkaditou, E., M. Corsini-Foka & G. Kondilatos (2009):** Description of the first Lessepsian squid migrant, *Sepioteuthis lessoniana* (Cephalopoda: Loliginidae), in the Aegean Sea (Eastern Mediterranean). *Med. Mar. Sci.*, 10/2, 87–97.
- Lin, C.Y., Y.C. Tsai & C.C. Chiao (2017):** Quantitative analysis of dynamic body patterning reveals the grammar of visual signals during the reproductive behavior of the oval squid *Sepioteuthis lessoniana*. *Front. Ecol. Evol.*, 5, 30.
- Marrone, A., A. Deidun, M. Corsini-Foka, B. Zava, E. Tinto, C. Rizzo & P. Battaglia (2025):** First record of *Sepioteuthis lessoniana* from the Maltese Archipelago, with further notes on its occurrence in the central Mediterranean Sea. *J. Mar. Sci. Eng.*, 13, 1783.
- Salman, A. (2002):** New report of the loliginid squid *Sepioteuthis lessoniana* Lesson, 1830 in the Mediterranean. *Isr. J. Zool.*, 48, 249–250.
- Salman, A., S. Akalın, A. Ünlüoğlu & C.M. Aydın (2023):** A checklist and some new records on the teuthofauna of Türkiye in the Northeastern Mediterranean Sea. *Ege J. Fish. Aquat. Sci.*, 40(3), 189–194.
- Segawa, S. (1987):** Life history of the oval squid, *Sepioteuthis lessoniana* in Kominato and adjacent waters central Honshu, Japan. *J. Tokyo Univ. Fish.*, 74(2), 67–105.
- WoRMS Editorial Board (2025):** World Register of Marine Species. Available from <https://www.marine-species.org> at VLIZ. Accessed 2025-11-27.